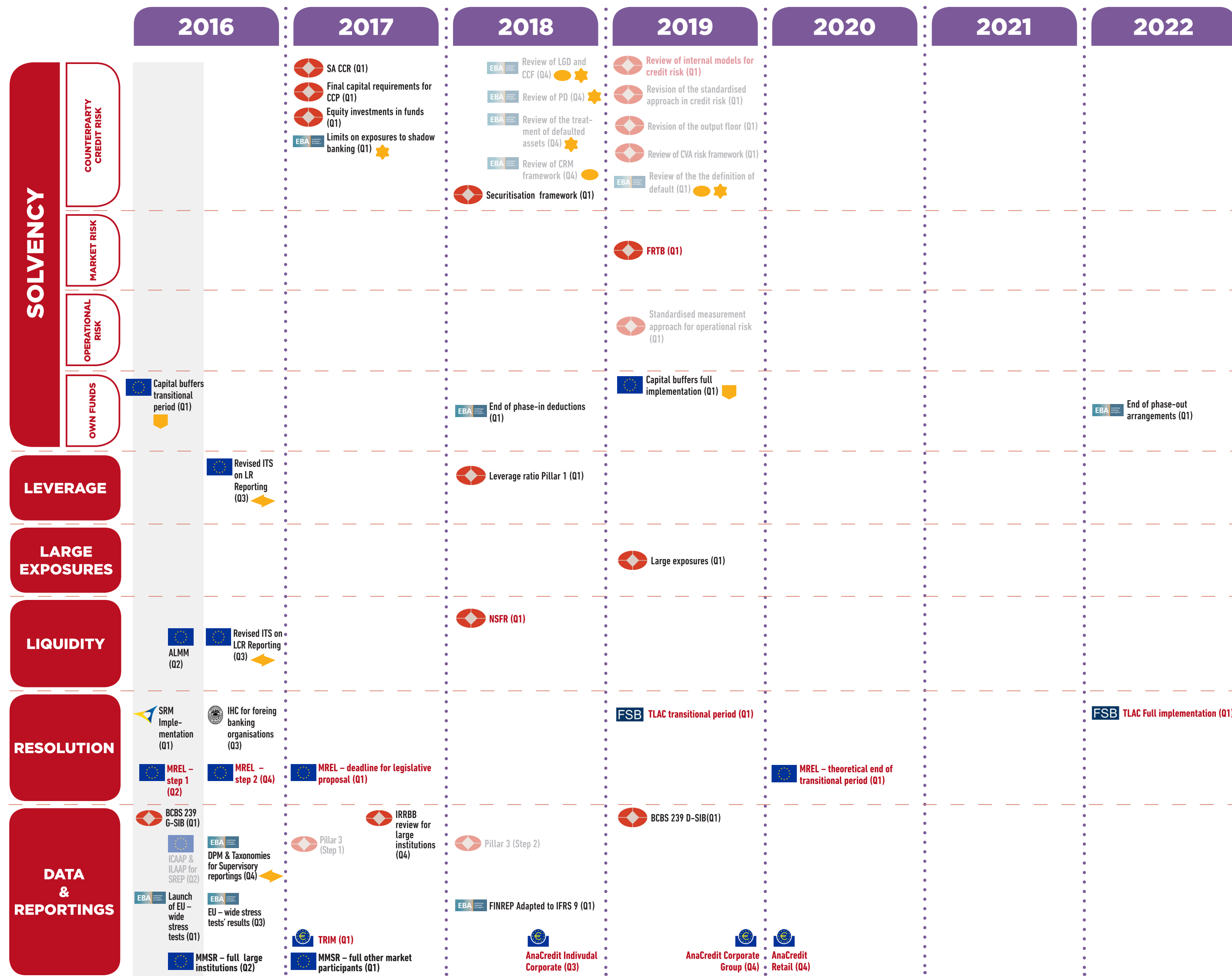


REGULATORY BANKING AGENDA

2016-2022

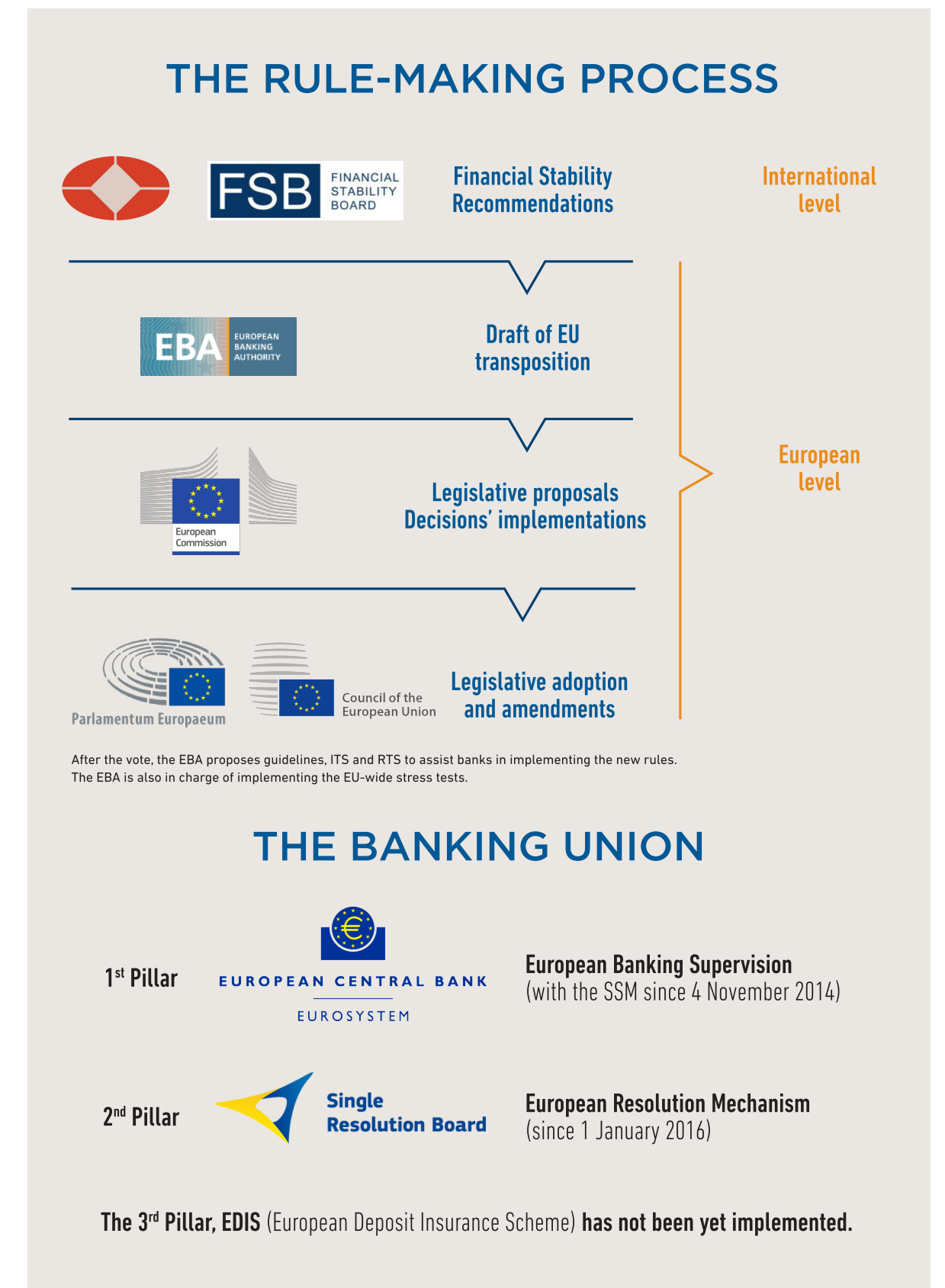


For the watermarked reforms, the implementation date is not confirmed | The reforms in red prints are the most significant for the banking industry

Financial Stability Board (FSB) |
 European Authority Banking (EBA) |
 European Central Bank (ECB) |
 Basel Committee on Banking Supervision (BCBS) |
 European Commission / European Parliament |
 Single Resolution Board (SRB) |
 Federal Reserve (FED)

Guidelines |
 ITS |
 Directive/Regulation |
 RTS

THE DECISION-MAKING PROCESS IN THE EUROPEAN UNION



GLOSSARY

- ALMM: Additional Liquidity Monitoring Metrics
- CCF: Credit Conversion Factor
- CCP: Central Counterparty
- CRM: Credit Risk Mitigation
- CVA: Credit Value Adjustment
- DPM: Data Point Model
- D-SIB: Domestic Systemically Important Bank
- FRTB: Fundamental Review of the Trading Book
- G-SIB: Global Systemically Important Bank
- ICAAP: Internal Capital Adequacy Assessment Process
- IHC: Intermediate Holding Company
- ILAAP: Internal Liquidity Adequacy Assessment Process
- IRRBB: Interest Rate Risk in the Banking Book
- ITS: Implementing Technical Standard
- LCR: Liquidity Coverage Ratio
- LGD: Loss Given Default
- LR: Leverage Ratio
- MMSR: Money Market Statistical Reporting
- MREL: Minimum Requirement for own funds and Eligible Liabilities
- NSFR: Net Stable Funding Ratio
- PD: Probability of Default
- RTS: Regulatory Technical Standard
- SA CCR: Standardised Approach for Counterparty Credit Risk
- SREP: Supervisory Review and Evaluation Process
- SRM: Single Resolution Mechanism
- TLAC: Total Loss-Absorbing Capacity
- TRIM: Targeted Review of Internal Models